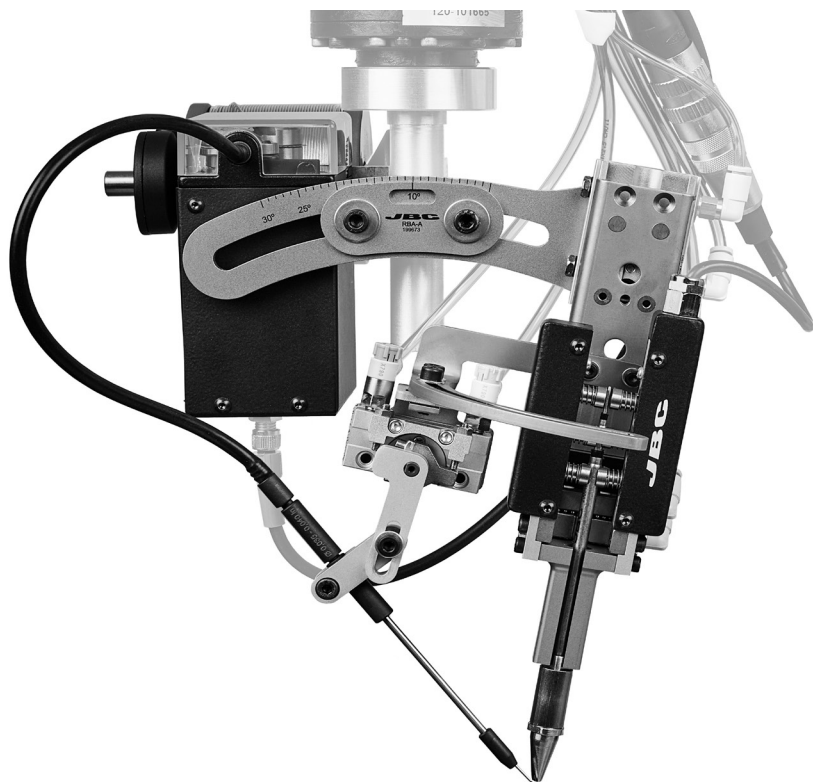


# JBC

[www.jbctools.com](http://www.jbctools.com)



## Soldering Unit

Ref. HA245A-5A / HA470A-5A

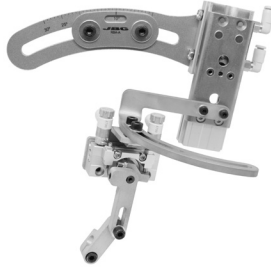
# Packing List

The following items should be included:

**Control Box** ..... 1 unit  
Ref. UCR245-5A or  
UCR470-5A



**Soldering Head**..... 1 unit  
Ref. RBA-A



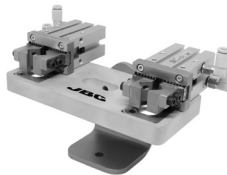
**Automatic Soldering Iron** ..... 1 unit  
Ref. TRA245-A or  
TRA470-A



**Solder Feeder** ..... 1 unit  
Ref. SFR-A



**Cartridge Stand** ..... 1 unit  
Ref. CS2R245-A or  
CS2R470-A



**Tip Cleaner** ..... 1 unit  
Ref. CLMR-A



**Manual** ..... 1 unit  
Ref. 0022416



## Specifications

**UCR245-5A** 85 - 265V 50/60Hz. Input fuse: 2A. Output: 22V.

**UCR470-5A** 85 - 265V 50/60Hz. Input fuse: 4A. Output: 42V.

- Net Weight: 2.20 kg (4.9 lb)
- Dimensions: 210 x 162 x 75 mm (8.3 x 6.4 x 3.0 in)
- Output Peak Power (on UCR245-5A): 160W
- Output Peak Power (on UCR470-5A): 250W
- Temperature Range: 90 - 500 °C (190 - 932 °F)
- Idle Temp. Stability (still air):  $\pm 1.5$  °C /  $\pm 3$  °F
- Tip to ground resistance: < 2 ohms
- Tip to ground voltage: < 2mV RMS
- Ambient operating temp: 10 - 40 °C (50 - 104 °F)
- Connections: Communications: M8-5pins  
Tool: M16-8pins

### **RBA-A**

- Net Weight: 576 g (1.27 lb)
- Dimensions: 176 x 148 x 160 mm (6.92 x 5.83 x 6.30 in)

### **TRA245-A or TRA470-A**

- Net Weight: 316 g (0.69 lb)
- Dimensions TR245-A: 122.1 x 68.4 x 52.6 mm (4.807 x 2.693 x 2.111 in)
- Dimensions TR470-A: 138.1 x 68.4 x 52.6 mm (5.437 x 2.693 x 2.111 in)

### **SFR-A**

- Net Weight: 870 gr (1.92 lb)
- Dimensions: 114 x 66 x 52 mm (4.49 x 2.60 x 2.05 in)
- Solder Wire Reel Dimensions: Max. diameter 80mm(3.2 in)
- Solder Wire Reel Weight: Up to 1kg (2.2 lb)
- Solder Diameter: Depends on the GSFR Kit used
- Max. Speed: 120 mm/s (4.72 in/s)
- Ambient Operating Temp.: 10 - 40 °C (50 - 104 °F)
- Connections: M8-5 pin Communication Connector

### **CS2R245-A or CS2R470-A**

- Net Weight: 690 g (1.51lb)
- Dimensions: 153 x 82 x 97 mm (6.02 x 3.23 x 3.82 in)

### **CLMR-A**

- Net Weight: 2,7 kg (5.9 lb)
- Dimensions: 137 x 153 x 110 mm (5.4 x 6.0 x 4.3 in)
- Brush diameter: 50 mm (2.0 in)

Complies with CE Standards.

ESD safe.

# JBC

---

## Warranty

JBC's two-year warranty covers this equipment against all manufacturing defects, including the replacement of defective parts and labour.

Warranty does not cover product wear or misuse.

In case of any manufacturing defect, the equipment must be returned, postage paid, to the dealer where it was purchased.

---



This product should not be thrown in the garbage.

In accordance with the European directive 2002/96/EC, electronic equipment at the end of their life must be collected and returned to an authorized recycling facility.



Manual in other languages available on our website

**[www.jbctools.com](http://www.jbctools.com)**